

## Frank Lumber "The Door Store"™

Frank Lumber is a major, dependable source for doors, locks and related products.

We have warehouses full of inventory—hundreds of combinations of models and sizes on hand and ready to ship now.

We have 1000's of doors in stock, both interior and exterior.

**Frank Lumber's** team of expert sales-people provides you with personalized service and advice for all of your door projects.

Odd sizes and out of the ordinary doors are Frank Lumber's specialty, we welcome them.

Custom homes, remodels, commercial projects, or single door replacements - we're here to help you right now!

WHY WAIT? GET A NEW DOOR TODAY!

**Frank Lumber**  
The Door Store™

**206-362-2311**

It has always been the goal of us at **Frank Lumber** to partner with our valued customers to help ensure the success of their projects & their satisfaction with our products & our people. Our customer service department is always willing to discuss a particular situation and we always are glad to help with advice and suggestions.

### **Frank Lumber takes pride in their doors & their customer service.**

We want to stand behind them and we promise to work together with our customers in a friendly, positive, and professional way!

### **Mission Statement:**

*To build & sell the broadest spectrum of doors & related products anywhere. Our focus is on quality materials, workmanship, and service tailored to suit highly diverse customer requirements.*

## FINISHING

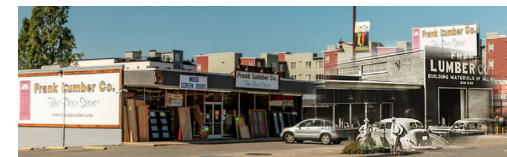
**Frank Lumber**

The Door Store™

**DOORS**



Monday - Friday 8 a.m. - 4:30 p.m.  
[www.FrankLumber.com](http://www.FrankLumber.com)



(206) 362-2311

[sales@franklumber.com](mailto:sales@franklumber.com)

7727 15th Ave. NE Shoreline, WA 98155

Fax (206) 362-7976

**FINISHING GUIDE**

FINISHING GUIDE (206) 362-2311 - SALES@FRANKLUMBER.COM



206-362-2311

### **General recommendations for stain or clear finishing :**

Coat with oil based wood conditioner such as Daly's Benite to harden the surface for finish sanding & promote uniformity of the stain color. If a stain color is desired, apply a penetrating oil-based stain. It is a good idea to do a test sample first. If a clear finish is desired, skip this step. Top coat with a clear, exterior grade oil-based finish. Semi-gloss or high gloss is preferable to a flat or satin finish. Daly's Teak Oil & Minwax Helmsman spar urethane are available at Frank Lumber.

### **General recommendations for painting:**

Apply a slow drying, penetrating oil-based primer to harden the surface for finish sanding & allow for the proper adherence of the finish paint.

Apply two to three coats of oil-based or acrylic latex exterior grade finish paint. Semi-gloss or high gloss is preferable to a flat or satin finish.

**Important:** Use only premium quality paints, stains, & clear finishes. Cheaper, mass produced products do not perform well & are not recommended. A specialty paint store or quality finishing shop can help you select the best products for each application. Read the labels on each product carefully and follow all directions regarding temperatures, drying times, & recommended number of coats to ensure the best possible results.

### **Finishing Guide - Interior Doors**

Interior doors should be finished prior to, or directly after installation. Improperly finished or unfinished doors carry no warranty. As with exterior doors, all surfaces, including the top & bottom, must be covered with all coats of recommended finishing products. Do not expose wood or MDF doors to moisture before finishing. Do not install unfinished interior doors before drywall taping. Interior walls should be finish coated, sanded & primed before the doors are hung or stored at the work-site.

**\*Note** that primer alone on the door(s) does not block the absorption of moisture.

### **Finishing Guide - Exterior Doors**

Exterior doors must be properly finished prior to installation or prolonged storage. Improperly finished or unfinished doors carry no warranty. All surfaces of a door, including the top & bottom, must be covered with all coats of recommended finishing products. As a final step, glass inserts in doors must be sealed- use a thin bead of clear silicone caulk around the outside perimeter between the glass & stops to prevent moisture infiltration into the core of the door(s).

#### **Finishing Disclaimer for Items Finished by Frank Lumber:**

Please note that minor color variations are expected between in-store displays, color match samples, or colors mixed from formulas. Every wood species varies slightly between batches & some species patina over time with exposure to UV. Natural wood has its own characteristics; grain color & pattern will occur. Our proprietary finish is warranted for 1 year, void on wood doors installed in high-hazardous areas.

### **There is no warranty extended to wood doors in the following applications:**

- Finishing requirements given previous are not met.
- Severe Southern or Western exposure with inadequate overhang.
- Dark colored paints used in direct sun exposure.
- Excessive cutting has undermined the integrity of the door structure

If you have questions specific to your situation, be sure to address them with a salesperson.

It is the sole responsibility of the customer to do all the necessary finish work (including cleaning the glazing sealant from glass inserts).

Inspect and clean the door carefully before you begin the finishing process.

Door manufacturers do not & will not compensate for finishing expense in warranty replacement situations.