

## Frank Lumber "The Door Store"™

Frank Lumber is a major, dependable source for doors, locks and related products.

We have warehouses full of door inventory- hundreds of combinations of models and sizes on hand and ready to ship now.

We have 1000's of doors in stock, both interior and exterior.

**Frank Lumber's** team of expert sales-people provides you with personalized service and advice for all of your door projects.

Odd sizes and out of the ordinary doors are our specialty, we welcome them.

Custom homes, remodels, commercial projects, or single door replacements - we're here to help you right now!

WHY WAIT? GET A NEW DOOR TODAY!

# Frank Lumber

The Door Store™

## 206-362-2311

It has always been the goal of us at **Frank Lumber** to partner with our valued customers to help ensure the success of their projects & their satisfaction with our products & our people. Our customer service department is always willing to discuss a particular situation and we always are glad to help with advice and suggestions.

### Frank Lumber takes pride in their doors & their customer service.

We want to stand behind them and we promise to work together with our customers in a friendly, positive, and professional way!

### Mission Statement:

*To build & sell the broadest spectrum of doors & related products anywhere. Our focus is on quality materials, workmanship, and service tailored to suit highly diverse customer requirements.*

# MATCH UP

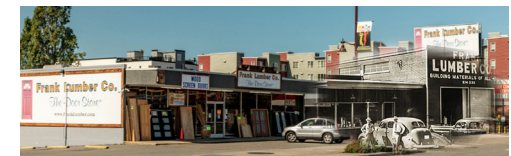
## Frank Lumber

The Door Store™

## DOORS



Monday - Friday 8 a.m. - 4:30 p.m.  
[www.FrankLumber.com](http://www.FrankLumber.com)



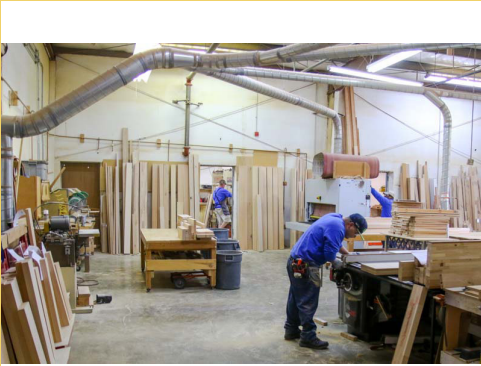
(206) 362-2311  
[sales@franklumber.com](mailto:sales@franklumber.com)  
7727 15th Ave. NE Shoreline, WA 98155  
Fax (206) 362-7976

**MATCH UP SERVICE**

MATCH UP SERVICE (206) 362-2311 - SALES@FRANKLUMBER.COM



206-362-2311



**MATCH-UP** is a service Frank Lumber offers to simplify door replacement into existing jambs.

A standard MATCH-UP includes cutting your new door to size, mortising for hinges & drilling for standard locksets. Anything else must be scheduled & charged accordingly (mortise locks, mail slots, viewer preparation, pet doors etc.).

A MATCH-UP takes 1-3 hours; however, because other orders may be ahead of yours, we can only guarantee completion by 4:30 p.m. on Weekdays, or 4:00 PM on Saturday.

#### **Base Labor Fees:**

- Single Interior: \$40/door
- Single Exterior: \$60/door
- Interior Double: \$70/door
- Exterior Double: \$110/door

**206-362-2311**

# Frank Lumber

The Door Store™

Follow these **Match Up Service** guidelines to help us offer you the best service possible:

- Measure the Height, Width, & Thickness of the existing door(s). If you have multiple doors, label or number them before removing them. Inspect the fit of each door.
- Select new door(s) & make a deposit to schedule your MATCH-UP appointment.
- Remove all hardware except hinges from your old door (locks, hooks, knockers). Locks will not be installed by us, (we do drill the correct holes). Leave the hinge pins in the jamb.
- Leave the old door(s) with us for the MATCH-UP. Be prepared to tell us if they are functioning properly (rubbing, sagging, large gaps, etc.). The MATCH-UP is most accurate if we have the old door(s) here, rather than using measurements on paper.
- If you intend to replace your locks, select them prior to your appointment day. If you have interlocking weatherstrip, you should discuss options for replacement with a salesperson beforehand.
- Once the match up is complete, take the new & old door(s) home so you can;
  1. Assure the fit of the new door &
  2. Pre-finish the new door while you have the old door hanging.

#### **Match Up Service Continued**

- MATCH-UPS may not be perfect the first time. Your new door may need to be brought back to Frank Lumber for adjustments – because the work is not being done at the site, test fitting is very important!
- A MATCH-UP is not guaranteed, but we will make adjustments in our shop, if it is needed.
- We do not install or replace interlocking weather strip-ping.
- We do not install hardware other than hinges. The door(s) should be test fit & finished before the locks are put on.
- A MATCH-UP is an in-store service only – we do not do any on-site work, pick-ups or deliveries!



**206-362-2311**