

WHY WAIT? GET A NEW DOOR TODAY!

Frank Lumber

The Door Store™

206-362-2311

Mission Statement:

To build & sell the broadest spectrum of doors & related products anywhere. Our focus is on quality materials, workmanship, & service tailored to suit highly diverse customer requirements.

(206) 362-2311
sales@franklumber.com
17727 15th Ave. NE
Shoreline, WA 98155
Fax (206) 362-7976
M-F 8:00 a.m. - 4:30 p.m.
www.FrankLumber.com

DOORS GALORE!

It has always been the goal of our team at **Frank Lumber** to partner with our valued customers to help ensure the success of their projects & their satisfaction with our products & our people. Our customer service department is always willing to discuss a particular situation and we always are glad to help with advice and suggestions.

Frank Lumber takes pride in their doors & their customer service.

We want to stand behind our doors & customer service and we promise to work together with our customers in a friendly, positive, and professional way!

206-362-2311



SALES FLYER

Frank Lumber

The Door Store™

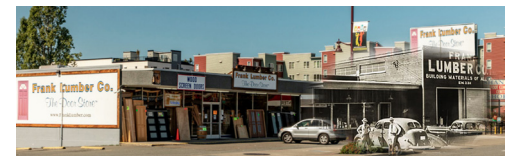
DOORS



DOORS

DOORS

Monday - Friday 8 a.m. - 4:30 p.m.
www.FrankLumber.com



(206) 362-2311
sales@franklumber.com
7727 15th Ave. NE Shoreline, WA 98155
Fax (206) 362-7976

GET A NEW DOOR TODAY!

SALES FLYER (206) 362-2311 - SALES@FRANKLUMBER.COM



MATCH-UP is a service *Frank Lumber* offers to simplify door replacement into existing jambs. A standard MATCH-UP includes cutting your new door to size, mortising for hinges, and drilling for standard locksets. A MATCH-UP takes 1-3 hours; however, because other orders may be ahead of yours, we can only guarantee completion by 4:30 p.m. on Weekdays, or 4:00 PM on Saturdays.

Base Labor Fees:

- Single Interior: \$40/door
- Single Exterior: \$60/door
- Interior Double: \$70/door
- Exterior Double: \$110/door

MATCH UP SERVICE
YOUR NEW DOOR!



GET YOUR NEW DOOR TODAY!
WHY WAIT?

Frank Lumber "The Door Store"™ is your source for doors, locks, and related products. We have warehouses full of inventory, with hundreds of combinations of models & sizes on hand. We have thousands of doors in stock, both interior and exterior.

Frank Lumber, "The Door Store"™ is the exclusive dealer of custom doors from *Kylemont Industries*. Kylemont doors are hand built in *Marysville WA* by our skilled craftsmen. Get doors custom built to your specifications within *two to three weeks!*

Many styles of doors can be seen at our stores. We stock a wide variety of doors to match your home's original design. Our team of expert sales-people will provide you with personalized service & advice for all of your door projects. Odd sizes & out of the ordinary doors are our specialty. We love a challenge!

Custom homes, remodels, commercial projects, and/or single door replacements...

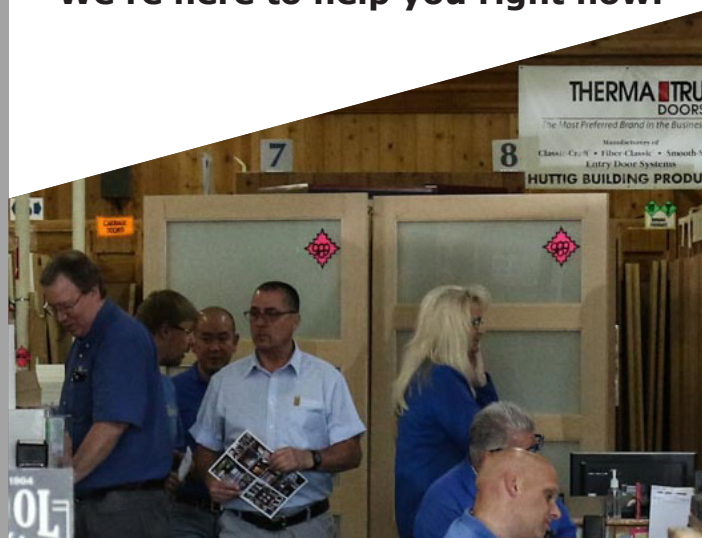
We're here to help you right now.



Frank Lumber was established in 1948 supplying building materials and hardware to the North Seattle area. **Frank Lumber** began selling doors during the 1960's to satisfy demand by local contractors.

Doors became an ever-increasing part of our business and today we specialize in doors and door hardware.

- Exterior Doors
- Interior Doors
- Bi-fold Doors
- Barn Doors
- Screen Doors
- Sidelites for Doors
- Leaded & Textured Glass
- Steel Art for Doors
- Components & Accessories



206-362-2311